

METRO PULL
Lengths 24" - 48" - 72"



AUR580 MWP Interior



Stock Finishes:

- US15 - Satin Nickel
- US14 - Polished Nickel
- US19 - Flat Black

Model

AM300 LM-R
Lever Mortise Set with Outside Release

- Includes:
- HD Mortise 2 1/2" or 2 3/4" Backset (Auto-Locking)
 - Cylinder for 1 3/4" to 2 3/4" Thick Door
 - Multiple Interior Trim Options
 - Low Profile Exterior Release for Latch

Kit Pricing Available

EXCLUSIVE DOOR HARDWARE



SAMPLE INSTALLATION

EXCLUSIVE DOOR HARDWARE

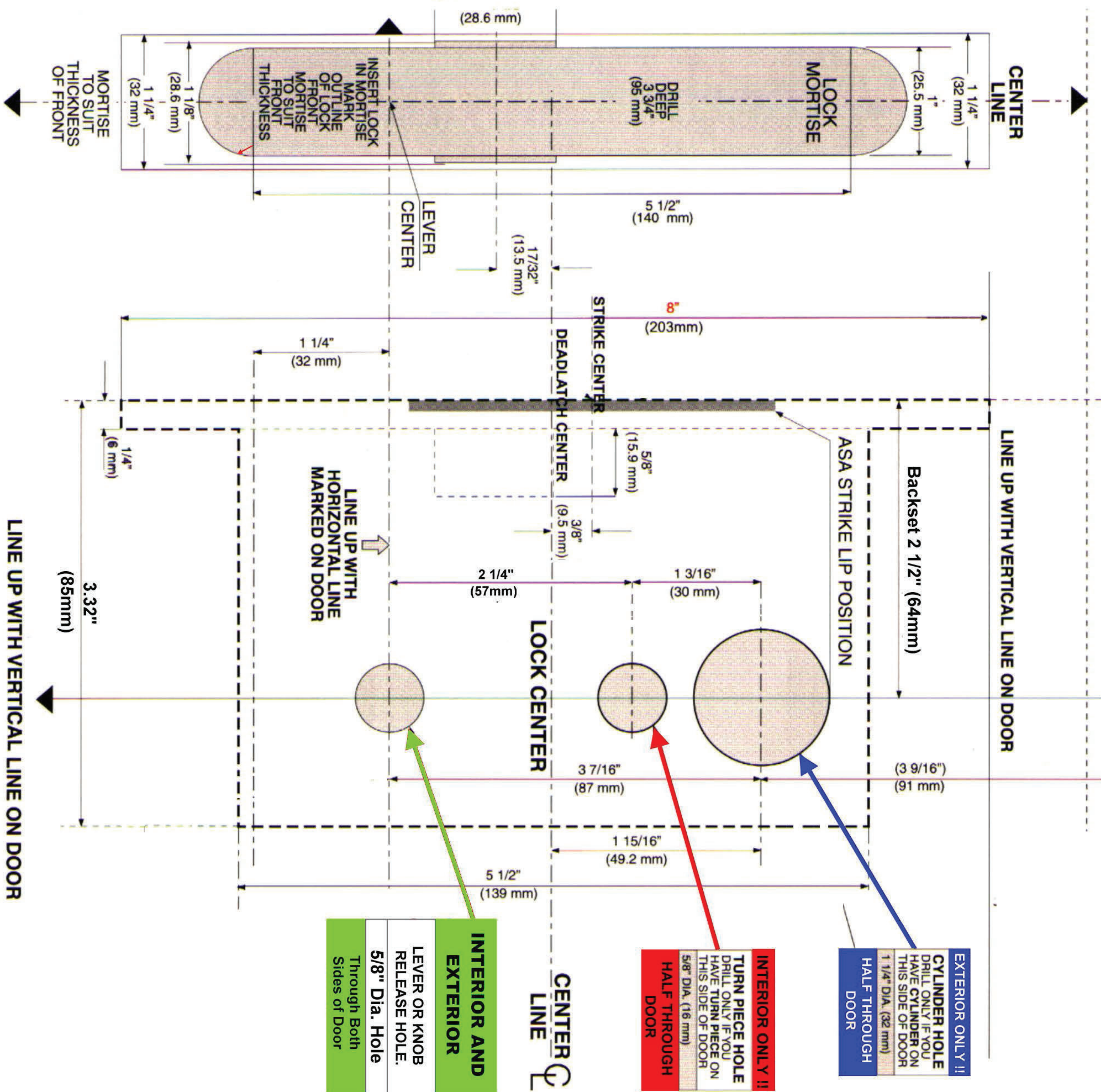
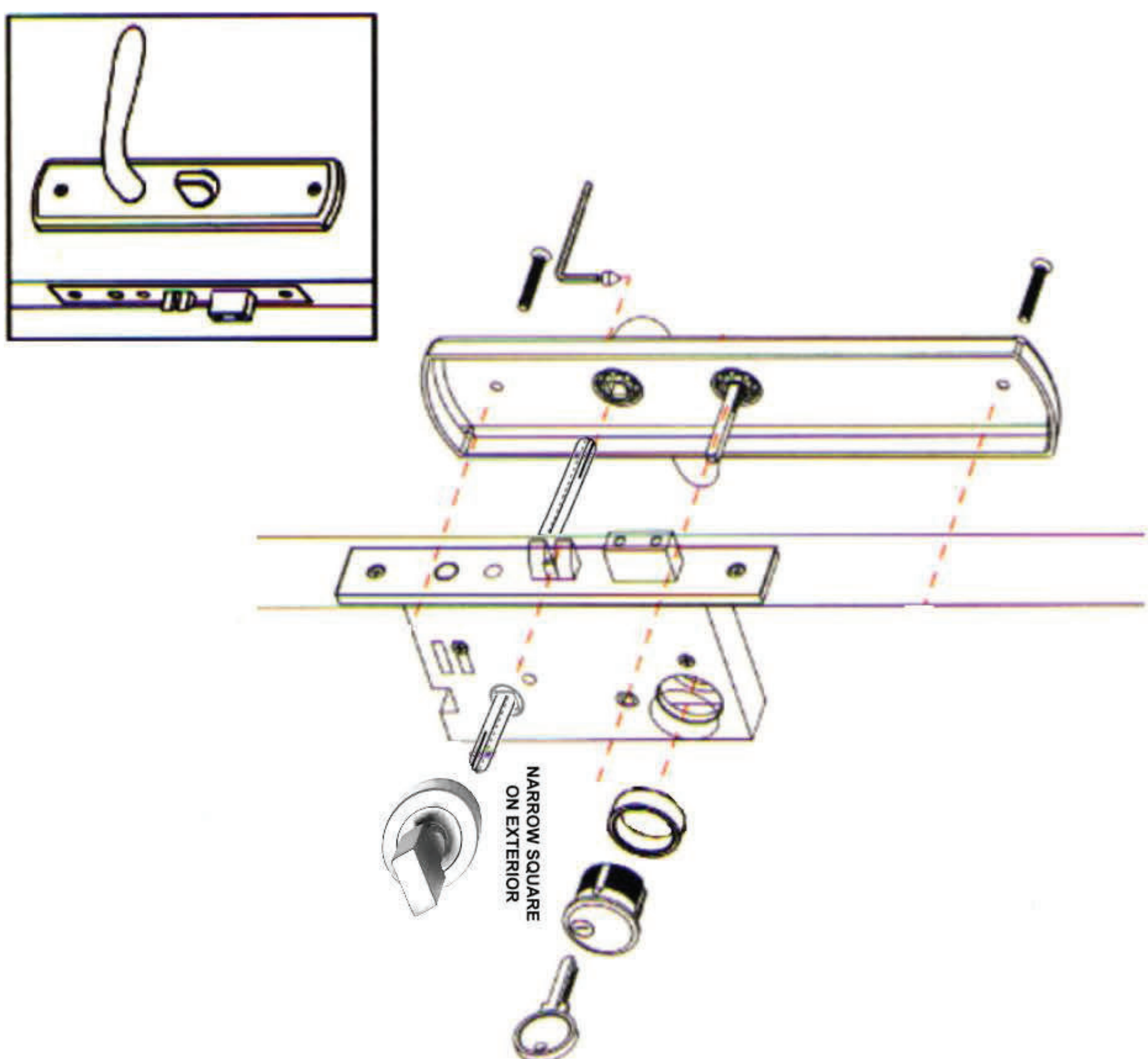


SAMPLE INSTALLATION

EXCLUSIVE DOOR HARDWARE

AM300 Installation Template

INSTRUCTION TEMPLATE FOR INSTALLATION OF AM300 SERIES MORTISE LOCKSET 2 1/2" BACKSET



EXTERIOR ONLY !!
CYLINDER HOLE
DRILL ONLY IF YOU
HAVE CYLINDER ON
THIS SIDE OF DOOR
1 1/4" DIA. (32 mm)
HALF THROUGH
DOOR

INTERIOR ONLY !!
TURN PIECE HOLE
DRILL ONLY IF YOU
HAVE TURN PIECE ON
THIS SIDE OF DOOR
5/8" DIA. (16 mm)
HALF THROUGH
DOOR

**INTERIOR AND
EXTERIOR**
LEVER OR KNOB
RELEASE HOLE.
5/8" Dia. Hole
Through Both
Sides of Door



UL Rated for 3hr - M1 Mortise Series - LISTED R12921

NOT TO SCALE