





THE LOCK WITHOUT HANDLE

ADVANTAGES

 design: the side of the door is completely smooth

 silence and fluidity during opening and closing of the door

 oxidation resistance

 reliability: only a few moving elements

 safety for children: no shock risk

 no maintenance required

➔ Backset

privacy: 28 mm

🔑 V Versions

privacy
passage

🔒 Front plate

height: 190 mm
width: 22 mm
thickness: 2.5 mm

◻ Follower

privacy: 6 mm

🏠 Material

brass

📏 Distance

4 mm

👉 On demand

accessories
-cover plate
-knobs
-special tool: $\varnothing 44$ mm

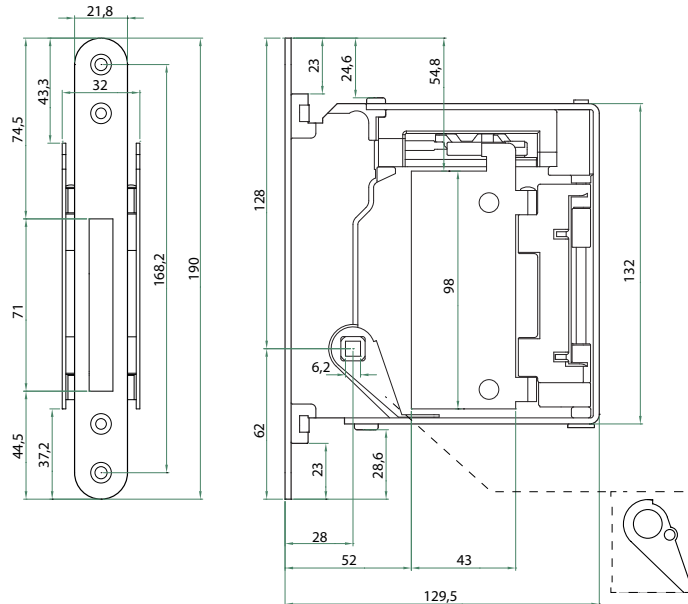
* maximum distance recommended between leaf and frame

THE LOCKS



PASSAGE

PRIVACY



↔
Door thickness

MIN 38 mm
MAX 48 mm

THE ADJUSTABLE STRIKING PLATES



GR95

GR95 Dimensions

height: 82 mm
width: 22 mm
thickness: 4 mm

GR95 Material

steel

THE FINISHINGS

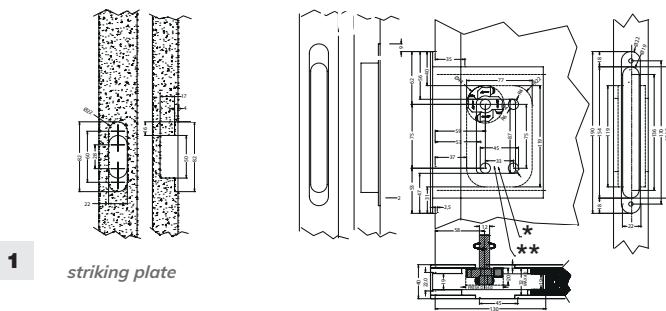


satin chrome



matt black

THE ASSEMBLING

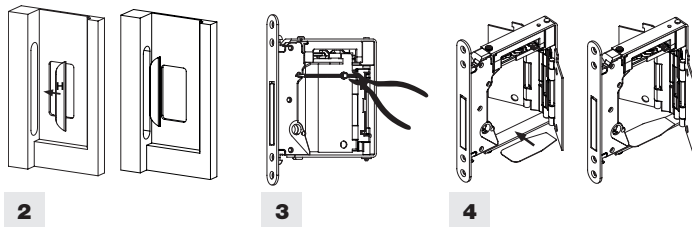


1 striking plate

ATTENTION: the B NO-HA mini lock can be installed on a traditional door, it needs however a particular milling to accept the operating mechanism [1].

* dimensiones cubierta 43,5 x 85,5 mm
cover dimensions

** dimensiones ranura 45 x 87 mm
hollow dimensions



2

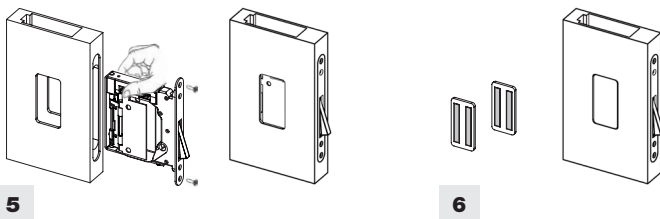
3

4

it

Apply the two finger-rest H inside the cavity use the bi-adhesive tapes included in the kit [2].
Remove the band which blocks the two lateral steel flap plates [3].
Apply the frame cover [4].

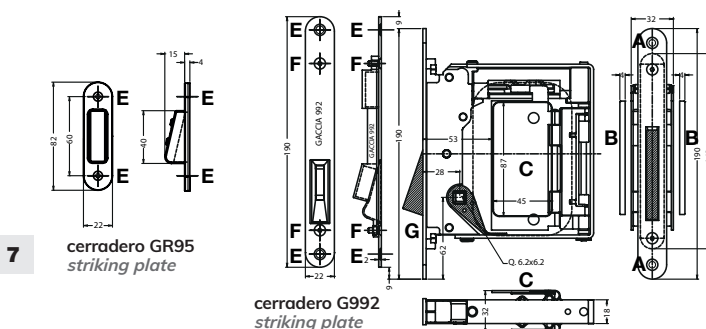
It is recommended to lubricate with some grease the external part of the brass triggers.



5

6

Insert the lock holding the two lateral steel flap plates and fix it with the two screws A on the front plate [5].
Put bi-adhesive tape [6] on the back of plate-covers B (not included) [7].



7 cerradero GR95 striking plate

cerradero G992 striking plate

- Stick the first plate-cover on flap plate C keeping pressed the other flap plate on opposite side; repeat operation for the second plate-cover.
- Verify the correct lock working as follows:
 - a) pull out the swinging latch G from the front-plate by pressing its upper side
 - b) operate the plate-cover B; the swinging latch G must return
 - c) put the striking plates GR95 or G992 opposite to the front plate; the swinging latch G must come out.
- Fix the striker on the frame with the screws E (not included).
- Check the door closing and eventually do the necessary regulations on striking plate acting on screws F.

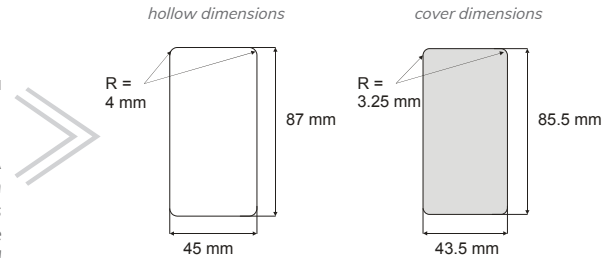
THE ACCESSORIES ON DEMAND

1 THE COVER



La Cubierta está diseñada para integrarse perfectamente en todos nuestros sistemas B NO-HA mini, y está disponible en MDF y metal. Las versiones en MDF (de color neutro) luego se pueden pintar, mientras que las Cubiertas metálicas están disponibles en los acabados latón brillante pintado, latón esta manera se integra perfectamente en el diseño de la puerta con los acabados de los frontales o del panel puerta.

The Cover is designed to perfectly integrate to all our B NO-HA mini systems and is available in MDF and metal. The MDF (with neutral colouring) are then paintable while the metal plates Covers are available in satin stainless steel. This integrates perfectly the door design with the finishes of the door locks or the door panel used.



Colors and shapes customization

The standard shape and colours are described above. The customer is free to customize the color and the shape with his trusted carpenter.



2 THE KNOBS FOR PRIVACY VERSION

The **blind Cartel Knob** has been specially developed for the B NO-HA mini locks version privacy, to guarantee the minimalist look of the door. The materials used for the realization of this product have been designed not to disturb in any case the correct functioning of the magnetism that operates the lock system. It's available in polished varnished brass, polished chromed brass and brushed stainless steel finishing.



only inner side

∅ 6 mm

3 THE SPECIAL TOOL



The **special tool 44 mm** diameter is the ideal instrument on CNC machines for the creation of the pit housing of the various B NO-HA mini systems, Single and Double.

By using this tool on the door panel you can create with a single machine working step the necessary template to properly install all B NO-HA mini systems.

